

formwise
washrooms

form

Distinctive and designed to be different, Form provides a contemporary appearance through its clean lines and multiple material options

form

The bold, unconventional and impressive style are achieved by using slimline stainless steel pilasters and increased door and partition thickness to create a dynamic looking cubicle.

Cubicle partitions are 30mm thick and extend past the line of the cubicle pilasters, the leading edge is fully radisued to a full bullnose. The cubicle doors are also 30mm thick but can also be manufactured from 10mm toughened screenprinted glass. Form cubicles can be manufactured using 13mm thick solid grade laminate for use in humid environments.

Features

- Stainless steel furniture
- Wide choice of material options including glass and veneers
- Unconventional, contemporary design
- Suitable for wet and dry environments

Details

2100mm overall height

100mm leg

1900mm door / div / pil height

2000mm division

Options

Alternative overall height

Alternative ground clearance

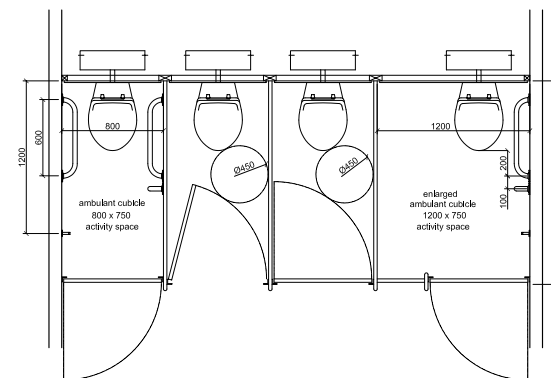
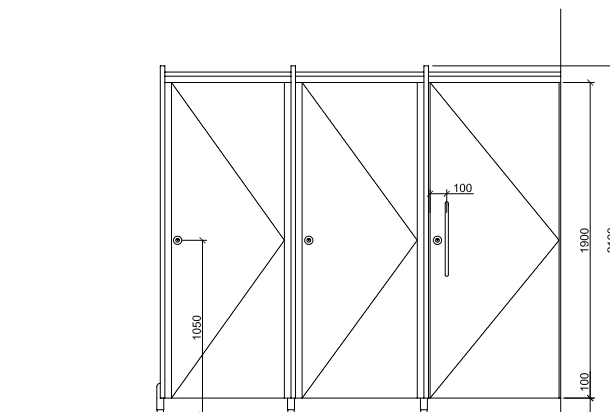
Note: All items can be supplied nationally on a supply only or supply and install basis. Installation is carried out by our fully qualified installation team.

Form cubicles can be supplied to comply with the latest Building Regulations Part M & Disability Discrimination Act (DDA).

01933 405961

www.formwise-washrooms.co.uk

Formwise Washrooms Unit 3 Wendel Point, Ryle Drive, Park Farm, Wellingborough, NN8 6BA



SYSTEM	PANEL SPECIFICATION						IRONMONGERY						
	facing			substrate			edge detail						
	mr mfc laminate (hpl)	solid grade laminate	screen printed glass	wood veneer	metal laminate	mr chipboard	mr mdf	wbp plywood	2mm pvc laminate	machined smooth hardwood	polished (glass)	polished aluminium	stainless steel
Form HPL	●	s	s	s					●	s	s	●	
Form SGL		●	s			●				●	s		●

Non standard cubicle heights, materials and finishes are available upon request

KEY

- mdf - medium density fibreboard
- mfc - melamine faced chipboard
- mr - moisture resistant
- hpl - high pressure laminate
- sgl - solid grade laminate
- wbp - water and boil proof
- s - special order

