



Kaleidoscope (MFC)

A bright, colourful and robust design produced specifically for children of all ages. Manufactured using 18mm moisture and impact resistant panels create sturdy cubicles for any dry environment.

MR Melamine Face Chipboard (MFC)

Heavy-duty fittings (SAA)

Made-To-Measure

Dry Application



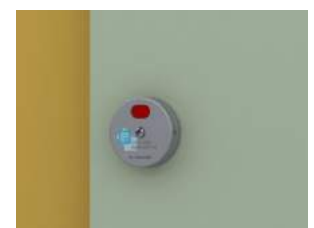
Hinge



Adjustable Leg



Tube Headrail



Indicator Lock



Kaleidoscope (MFC)

Specification

- Doors:** 18mm Moisture resistant Melamine faced chip board (MFC) with 2mm high impact ABS edging
- Partitions:** 18mm Moisture resistant Melamine faced chip board (MFC) with 2mm high impact ABS edging
- Pilasters:** 18mm Moisture resistant Melamine faced chip board (MFC) with 2mm high impact ABS edging
- Hardware:** Satin Anodised Aluminium (SAA) fittings - Headrail, pilaster brackets, wall brackets, adjustable leg, Pilaster lock and hinges.
- Overall Cubicle Height - 2100mm including 150mm adjustable leg clearance**

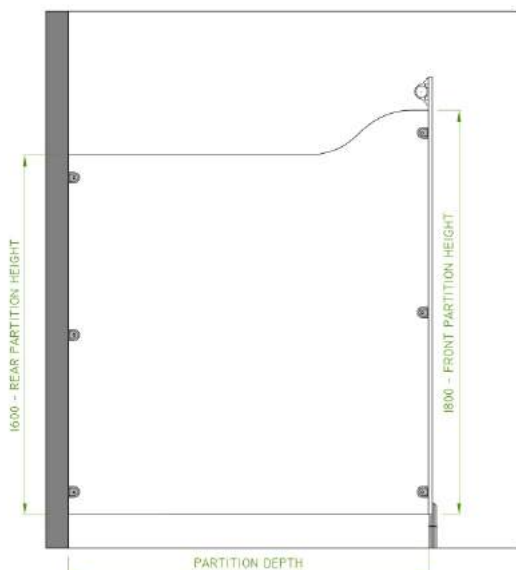
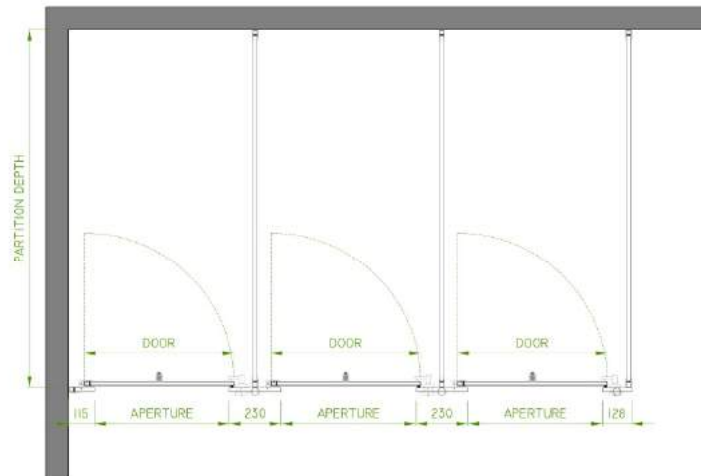
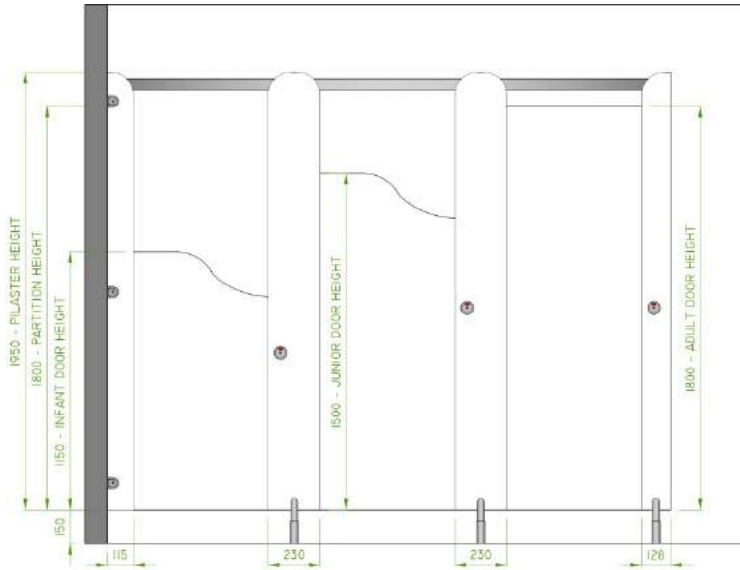
Colour Options

- Doors / Partitions / Pilasters** L4136, L4116, L2446, L2207, L2206, L1828, L122, L6063, L2208, L2069

Kaleidoscope (MFC) is also available in others colours upon request

Size Guide

- Overall Height:** 2100mm (150mm from floor)
- Partition Shaped Height:** 1800mm
- Partition Depth:** Made to depth required
- Pilaster Height:** 1950mm
- End/Wall Pilaster Width:** 115/128mm
- Centre Pilaster Width:** 230mm
- Door Width:** Made to measure
- Door Height:** 1150/1500/1800mm





Kaleidoscope (SGL)

A bright, colourful and robust design produced for children of all ages. Designed specifically for wet and dry areas or areas of high humidity and fluctuating temperatures.

[Solid Grade Laminate \(SGL\)](#)

[Heavy-duty fittings \(SAA\)](#)

[Made-To-Measure](#)

[Wet & Dry Application](#)



Hinge



Adjustable Leg



Tube Headrail



Indicator Lock



Kaleidoscope (SGL)

Specification

Doors:	13mm Solid Grade Compact (SGL) with routed edges and black core
Partitions:	13mm Solid Grade Compact (SGL) with routed edges and black core
Pilasters:	13mm Solid Grade Compact (SGL) with routed edges and black core
Hardware:	Satin Anodised Aluminium (SAA) fittings - Headrail, pilaster brackets, wall brackets, adjustable leg, Pilaster lock and hinges.

Overall Cubicle Height - 2100mm including 150mm adjustable leg clearance

Colour Options

Doors / Partitions / Pilasters	G031, C062, P092, R021, Y022, B001, L212, L6063, L2208, L2069
--------------------------------	---

Kaleidoscope (SGL) is also available in others colours upon request

Size Guide

Overall Height:	2100mm (150mm from floor)
Partition Shaped Height:	1800mm
Partition Depth:	Made to depth required
Pilaster Height:	1950mm
End/Wall Pilaster Width:	115/128mm
Centre Pilaster Width:	230mm
Door Width:	Made to measure
Door Height:	1150/1500/1800mm

