



Tiny Tots (MFC)

A bright, colourful and robust design produced specifically for young children. Manufactured using 18mm moisture and impact resistant panels create sturdy cubicles for any dry environment.

MR Melamine Face Chipboard (MFC)

Heavy-duty fittings (SAA)

Made-To-Measure

Dry Application



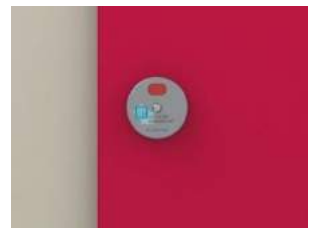
Hinge



Adjustable Leg



Channel Bracket



Indicator Lock



Tiny Tots (MFC)

Specification

- Doors:** 18mm Moisture resistant Melamine faced chip board (MFC) with 2mm high impact ABS edging
- Partitions:** 18mm Moisture resistant Melamine faced chip board (MFC) with 2mm high impact ABS edging
- Pilasters:** 18mm Moisture resistant Melamine faced chip board (MFC) with 2mm high impact ABS edging
- Hardware:** Satin Anodised Aluminium (SAA) fittings - Headrail, pilaster brackets, wall brackets, adjustable leg, Pilaster lock and hinges.
- Overall Cubicle Height - 1450mm including 150mm adjustable leg clearance**

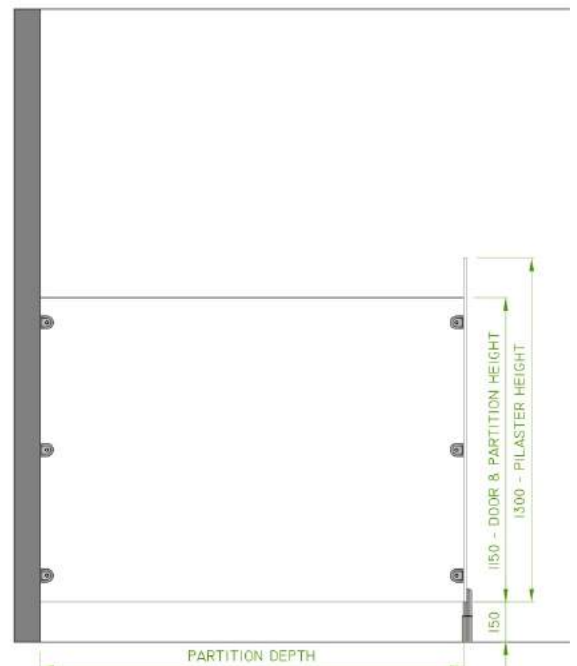
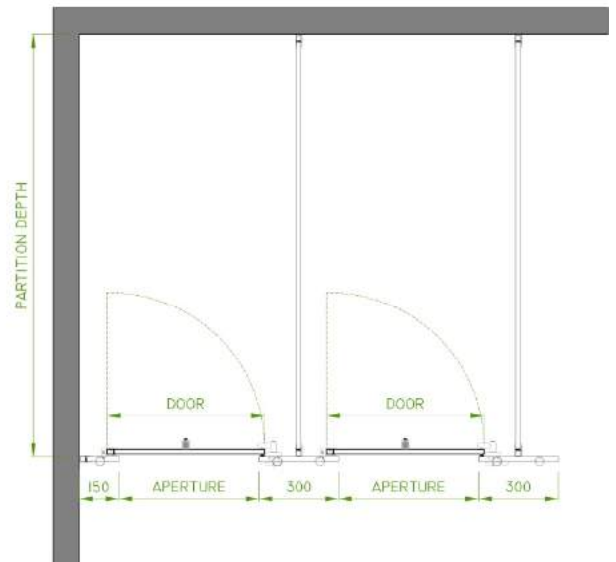
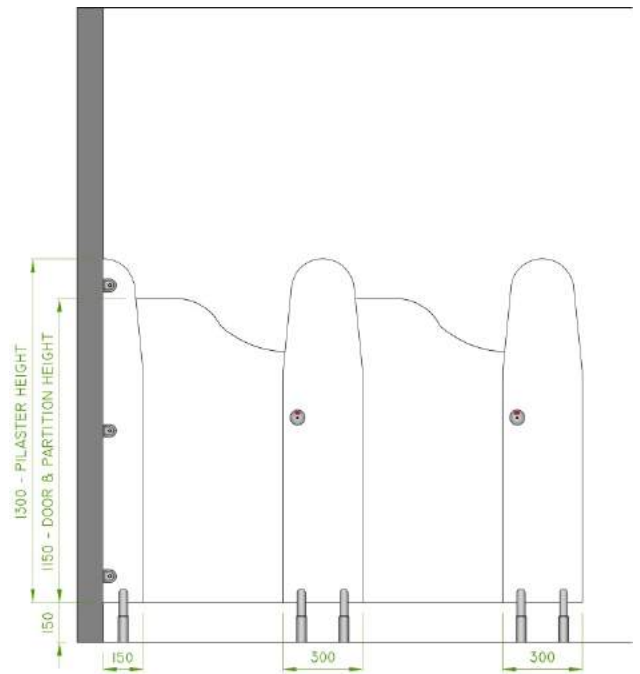
Colour Options

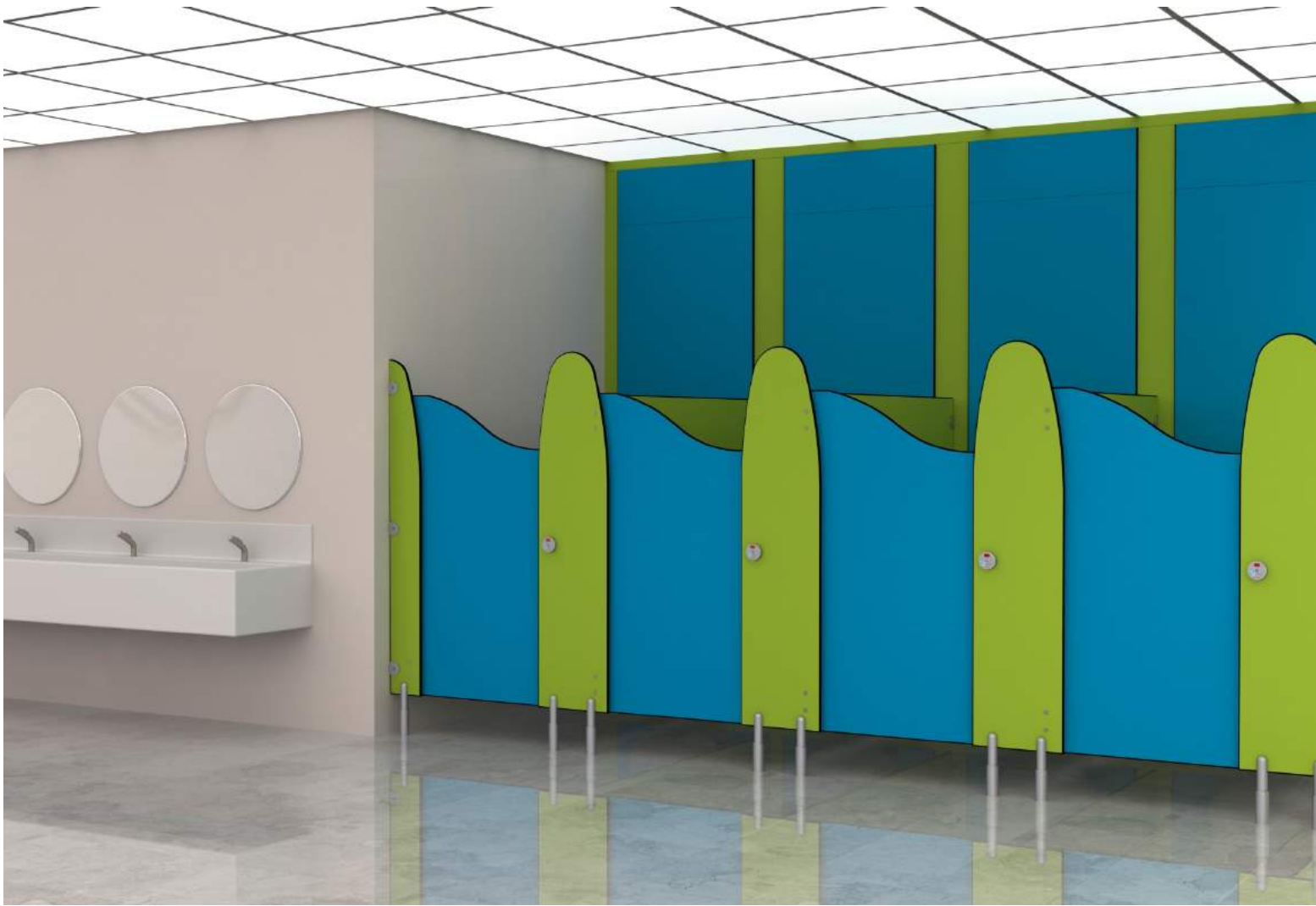
- Doors / Partitions / Pilasters** L4136, L4116, L2446, L2207, L2206, L1828, L122, L6063, L2208, L2069

Tiny Tots (MFC) is also available in others colours upon request

Size Guide

- Overall Height:** 1450mm (150mm from floor)
- Partition Height:** 1150mm
- Partition Depth:** Made to depth required
- Pilaster Height:** 1300mm
- End/Wall Pilaster Width:** 150mm
- Centre Pilaster Width:** 300mm
- Door Width:** Made to measure
- Door Height:** 1150mm





Tiny Tots (SGL)

Designed for young children to be fun but private to use with self-supporting panels and doors that bring a bright and spacious feeling to your washroom.

[Solid Grade Laminate \(SGL\)](#)

[Heavy-duty fittings \(SAA\)](#)

[Made-To-Measure](#)

[Wet & Dry Application](#)



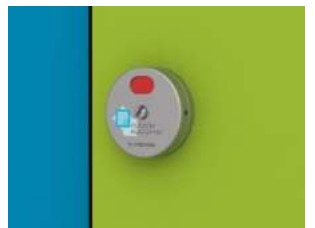
Hinge



Adjustable Leg



Channel Bracket



Indicator Lock



Tiny Tots (SGL)

Specification

- Doors:** 13mm Solid Grade Compact (SGL) with routed edges and black core
- Partitions:** 13mm Solid Grade Compact (SGL) with routed edges and black core
- Pilasters:** 13mm Solid Grade Compact (SGL) with routed edges and black core
- Hardware:** Satin Anodised Aluminium (SAA) fittings - Headrail, pilaster brackets, wall brackets, adjustable leg, Pilaster lock and hinges.
- Overall Cubicle Height - 1450mm including 150mm adjustable leg clearance

Colour Options

- Doors / Partitions / Pilasters** G031, C062, P092, R021, Y022, B001, L212, L6063, L2208, L2069

Tiny Tots (SGL) is also available in others colours upon request

Size Guide

- Overall Height:** 1450mm (150mm from floor)
- Partition Height:** 1150mm
- Partition Depth:** Made to depth required
- Pilaster Height:** 1300mm
- End/Wall Pilaster Width:** 150mm
- Centre Pilaster Width:** 300mm
- Door Width:** Made to measure
- Door Height:** 1150mm

