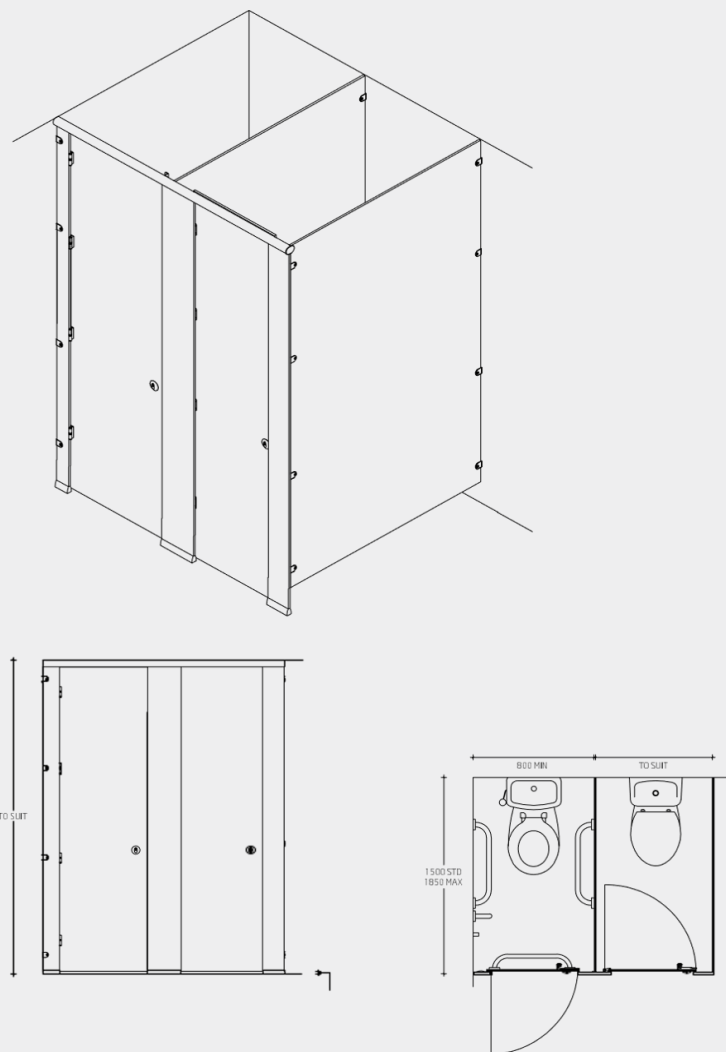




# Altitude

A Floor to Ceiling Cubicle System, offering the perfect mix of privacy, aesthetics and construction.

# Altitude



Floor to Ceiling Cubicles, with minimal floor clearance, available in SGL and HPL finish to suit your design brief.

## Specification

Pilasters/Divisions/Doors:

Panel Spec Options:

Please note we strongly recommend the SGL Panel Option for high traffic and wet areas.

- SGL Core/Face: Solid grade laminate with colour finish to both sides giving 13mm nominal thickness
- Edge: Polished and radiused
- HPL Core/Face: High density particleboard faced both sides with high pressure laminate giving 18mm nominal thickness
- Edge: Matching 2mm thick impact resistant ABS lipping
- Colour: From the Dunhams colour selector

Hardware:

- All fittings manufactured from high quality polished aluminium
- Pedestals: Solid rolled pedestal giving 25mm floor clearance
- Hinges: High strength insert with anti-breakout sleeve and self-closing cams
- Indicator Bolt: Easy slide action lock with integrated buffer and emergency door release facility
- Partition Fixing: Partitions secured with aluminium D brackets and stainless steel bolt-thru fixings
- Headrail: D section headrail for maximum strength
- Coat Hook: Matching coat hook, 1 per cubicle

Toilet Cubicles solution for:

- ▶ Industrial
- ▶ Office
- ▶ Retail
- ▶ Governments
- ▶ Entertainment
- ▶ Transport

Options:

All Panels Full Height

Standard height doors with overpanel above

Ultimate Privacy:

- Extra privacy channel skirting to divisions for 0mm floor clearance

Hardware:

- Powder coated to match RAL colours

Panel Finishes – Extra Cost Options:

- Dunhams Grafix range
- Specially sourced laminates to meet your exact requirements

Complementary Options:

- Vanity Units and Duct Panel Systems are available to complement Altitude Cubicles
- Solid Grade Laminate option (SGL) popular for Shower Cubicles

Find out more at [dunhamswashrooms.com](https://dunhamswashrooms.com) or call **01603 424855**