



# Contender

# Contender

The Contender Cubicle System is a low cost robust CDF toilet cubicle range designed for projects with a tight budget.

## Specification

### Pilasters/Divisions/Doors:

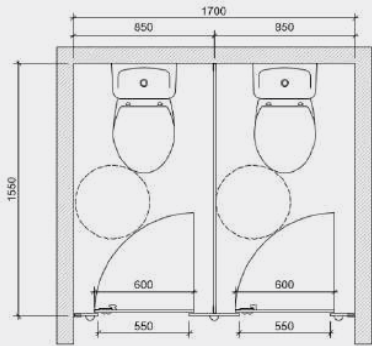
### Panel Spec Options:

- CDF Core/Face: Compact Density Fibreboard with colour finish to both sides giving 13mm thickness
- Edge: Polished and radiused
- Colour: From the Dunhams CDF colour selector

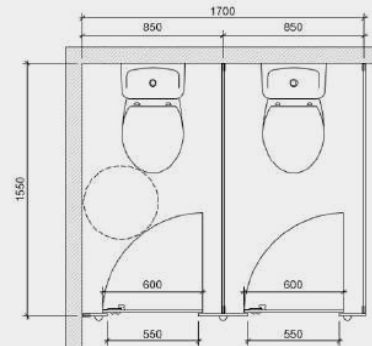
### Hardware:

All fittings manufactured from high quality brushed aluminium

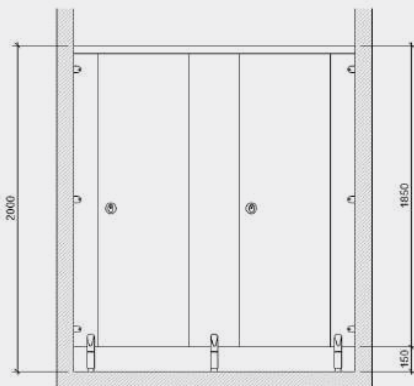
- Pedestals: High strength solid cast aluminium pedestal with floor fixing and height adjustment
- Hinges: Brushed aluminium safety hinges with adjustable rise-fall cams and high strength bolt-thru fixing system.
- Indicator Bolt: Aluminium slide action indicator bolt with emergency release facility and integral buffer
- Partition Fixing: Aluminium cleats with stainless steel interbolt panel fixings
- Headrail: High strength continuous extruded aluminium 'D' section



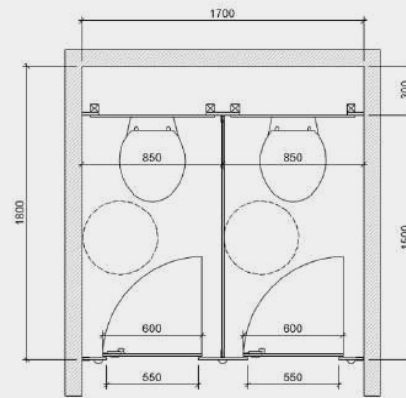
TYPICAL ENCLOSED WC CUBICLES  
(without IPS Duct Panels)



TYPICAL CORNER RANGE WC CUBICLES  
(without IPS Duct Panels)



TYPICAL CUBICLE FRONT ELEVATIONS



TYPICAL ENCLOSED WC CUBICLES  
(with IPS Duct Panels)

## Toilet Cubicles solution for:

- ▶ Warehouses
- ▶ Offices
- ▶ Industrial
- ▶ Transport

### Panel Finishes – Extra Cost Options:

- Specially sourced CDF colour finishes to meet your exact requirements (please note this will likely incur extra lead time)

### Height:

- Overall Height: 2000mm
- Widths: from 700mm
- Floor Clearance: 150mm
- Depth: 1500mm standard | 2200 max
- Panel Thickness: 13mm

### Complementary Options:

- Vanity Units and Duct Panel Systems are available to complement Contender Cubicles



ENVIROMENTALLY  
FRIENDLY



FLAME RESISTANT  
CERTIFICATION



100%  
RECYCLABLE



COST  
EFFECTIVE



30% WEIGHT  
SAVING OVER SGL

Find out more at [dunhamswashrooms.com](http://dunhamswashrooms.com) or call **01603 424855**