

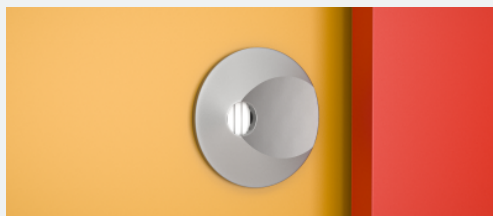
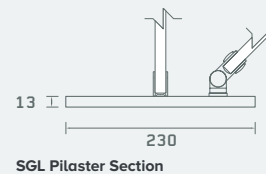
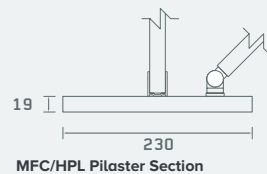
TINY STUFF™

Designed specifically for Early Years in two height options, Tiny Stuff is a fun, safe and reliable cubicle secured with sturdy floor and wall channels for stability.

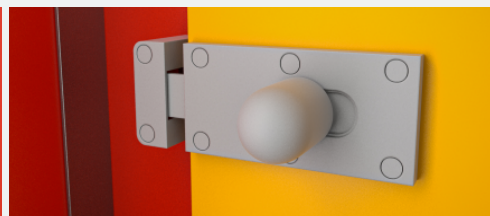
Tiny Stuff features floor-mounted pilasters and sturdy wall fixings to ensure robustness, anti-finger-trap hinges for added safety and low height doors with no headrail for easy supervision. Tiny Stuff has shaped doors and pilasters which are so much fun!

Finish	Laminate
Performance	MFC HPL SGL
Pilasters and Doors	Crescent pilaster with curvy door Arrowhead pilaster with angle door To match performance specification
Fittings	Light Grey Powder Coated Aluminium with Light Grey ABS Locks
Hinges	Anti-finger-trap as standard
Door Heights	1050mm 1250mm to top of door/partition (including floor clearance)
Floor Clearance	100mm
Headrail	No headrail for easy access and supervision
Colours	34 Laminate Options

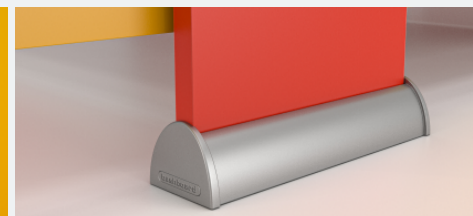
Cross Section



ABS Faceplate



ABS Lock



Pilaster Foot

Full range of sanitaryware and brassware available ready plumbed to vanity units and duct panels. For more information on our Ready Plumbed Modules, click here.



Helpful Links

[View our full product range online](#)

[Create your specification with our online tool](#)

[Try out colours on our Design Tool](#)

[Read our case studies and helpful blogs](#)



HAVE YOU CONSIDERED?



SHWB105 • SanCeram Shenley 400 Slim Semi-Recessed Basin

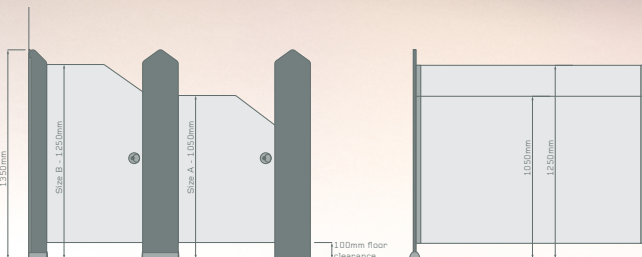


SCBW119 • SanCeram Deck Mounted Sensor Tap



SHWC101 • SanCeram Shenley School 350 Lower Height WC

[View sanitaryware options online](#)



ABOVE – TINY STUFF™ CUBICLES

Doors: Mustard | **Pilasters:** Bright Red | **Fittings:** Light Grey | **Vanity:** Semi-Recessed Vanity Unit and undervanity in Bright Red with Mustard panels | **Basin:** Shenley 400 Slim Semi-Recessed Basin | **Tap:** SanCeram Deck Mounted Sensor Tap