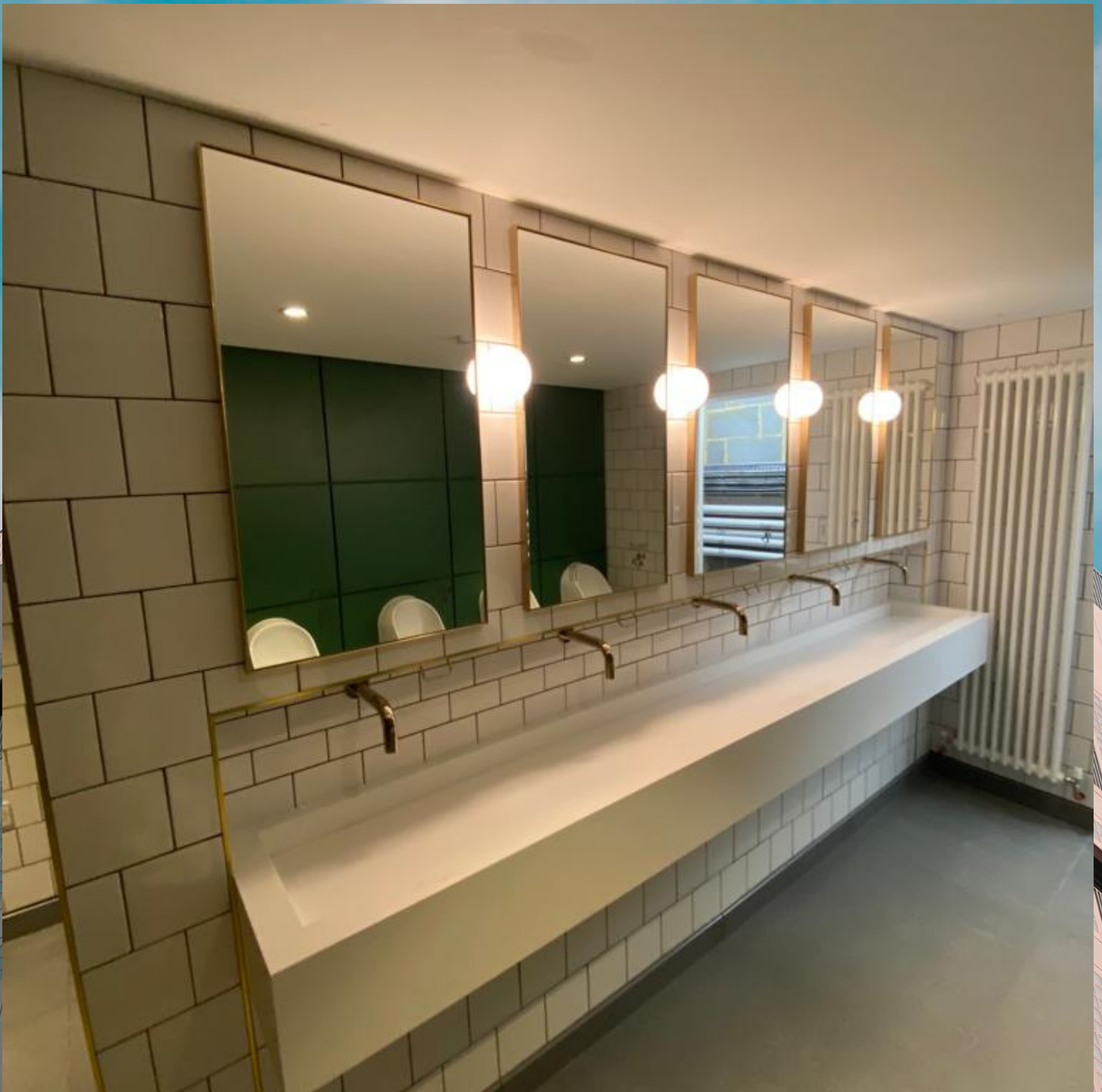
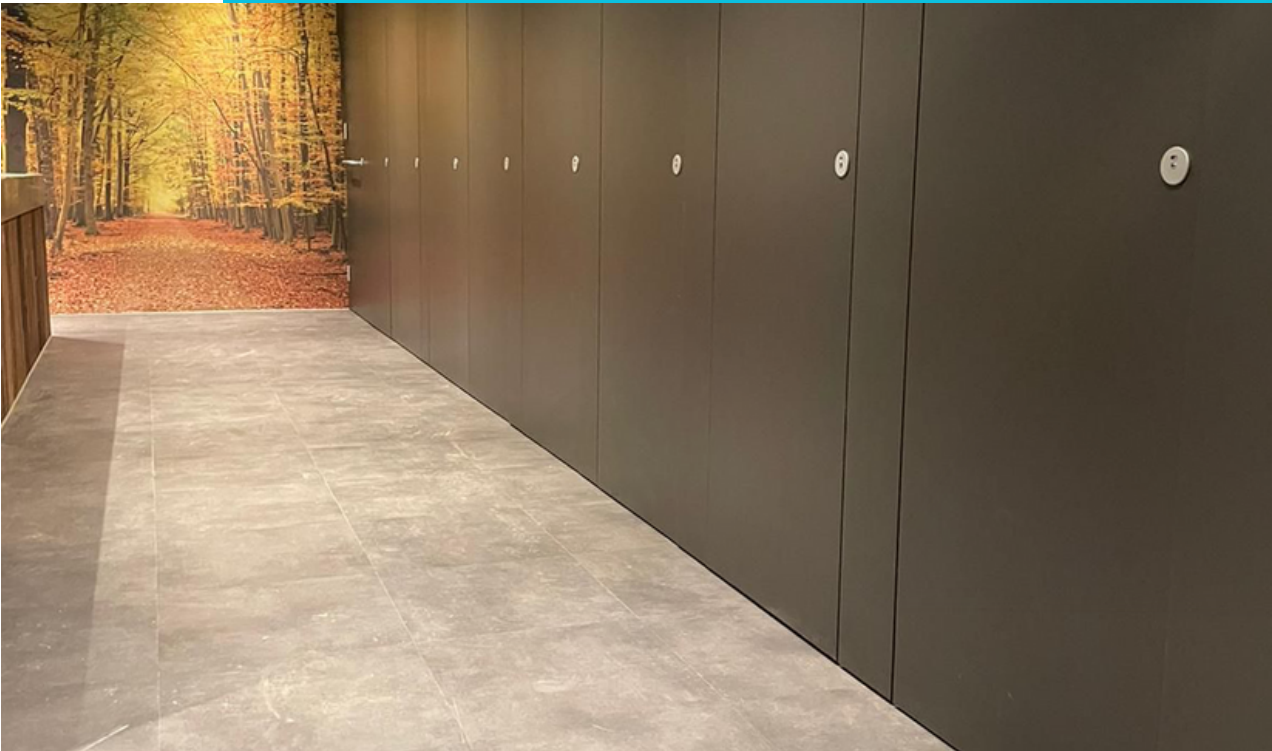




# Beautiful

W A S H R O O M S





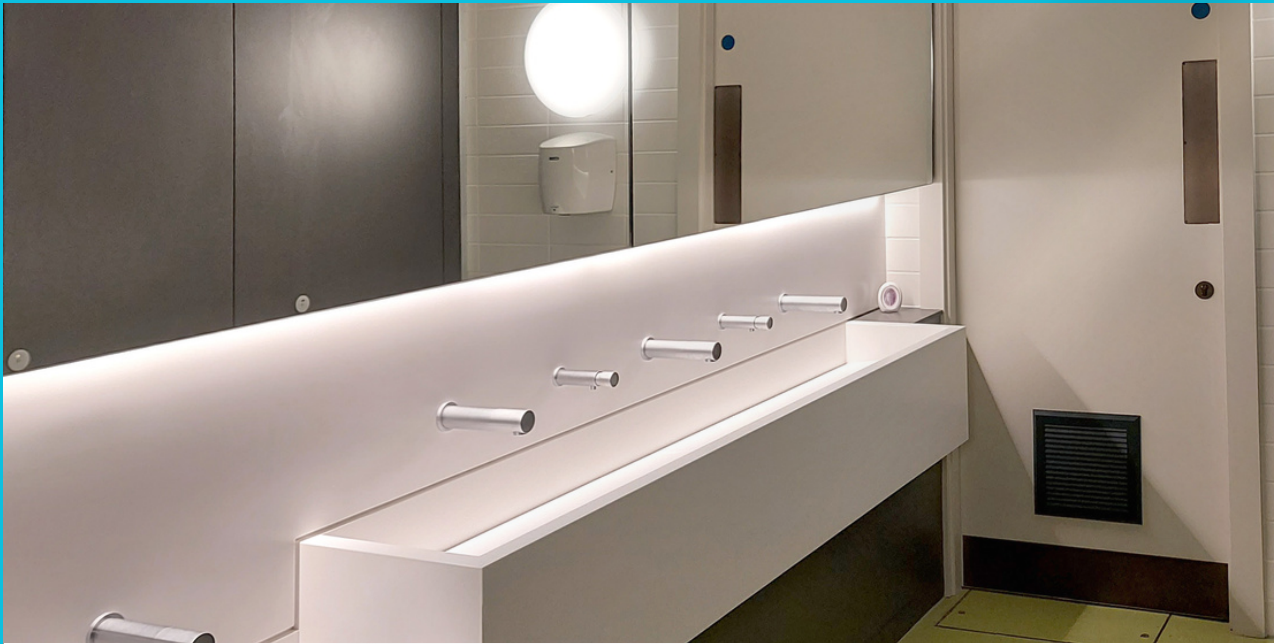
# Why refurbish

Nothing will date your environment like a rundown washroom. By opting for a remodel you can give the entire property a facelift. But what are the benefits?

- Environmentally friendly and cost effective
- Improved user experience
- Reputation



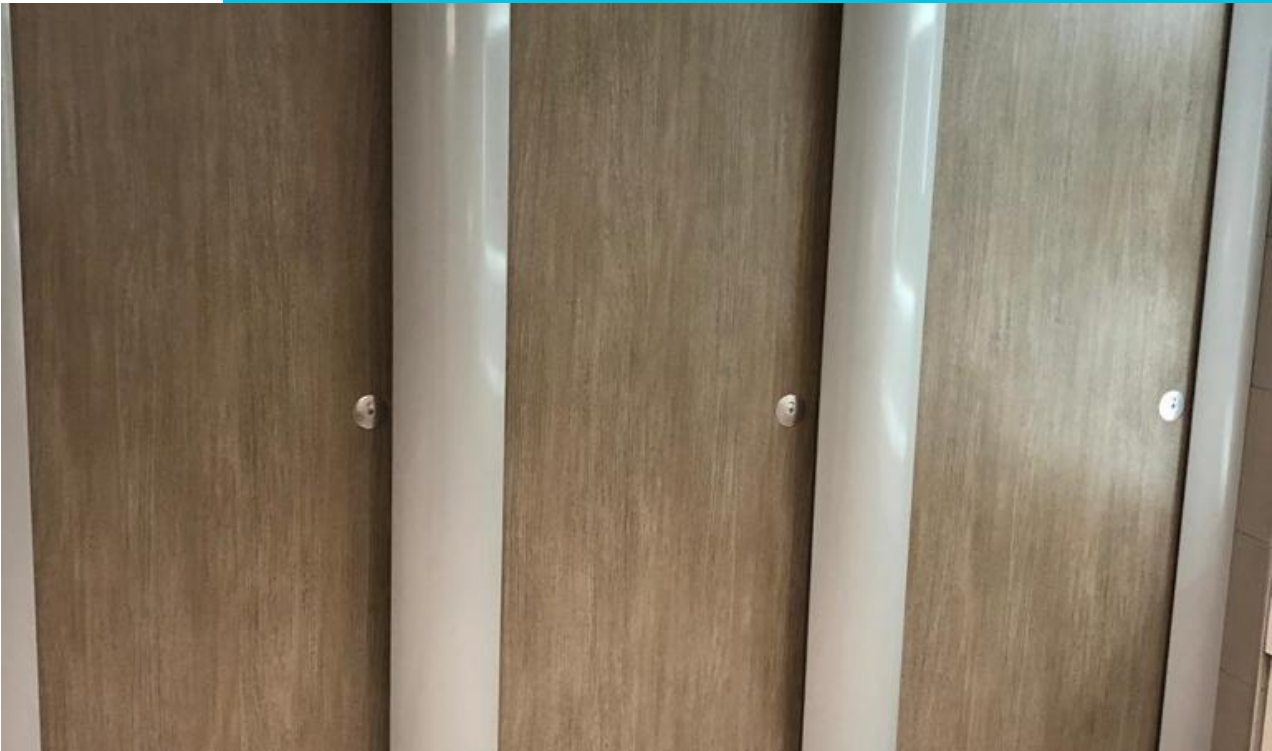




## Where to start

If you are starting from scratch or updating an existing washroom we will give you the professional advice you require. Listed here are some of the many items that need to be considered when planning your washroom. Let our designers and consultants do the work for you. Whether it is a modern washroom with a luxurious finish, a high-traffic environment, or a unisex design we will provide a complete design package to meet your requirements.

- Full or part refurbishment
- User type
- Usage per day
- Design
- Maintenance v cleaning v design
- Suppliers of laminates and products



## How we work

We pride ourselves on delivering your perfect washroom or toilet solution from concept to conclusion.

- Initially, we visit our clients on site for a full survey and to collect as much information as possible then discuss options and your requirements.
- Next, we return to you and put together a proposal which includes summary of costings, full breakdown, mood boards and other information. This is delivered and presented to you normally within 2 weeks.
- If our quotation is accepted then once we have received an order we arrange a “pre-start meeting” and arrange start dates.
- Once works commence one of our project managers will be your day to day contact for the duration.
- At the end, we hand over a “turnkey” solution.



# Bespoke design service

We are proud to deliver a solution that meets your specific needs. As part of our service we work with you and our team of expert designers to create a space that works. Our new 3D visuals bring this to life so that you can see exactly what you will receive and also be able to communicate effectively with your stakeholders.







## About Us

County Washrooms are a family-run company with years of experience serving the Education sectors offering only complete washroom refurbishments and solutions.

Our complete turn-key service means we work with you from concept to completion to deliver your ideal washroom. Each package combines everything you'll need, safely installed by our own qualified and experienced staff. County Washrooms offers a fully consultative approach to each washroom refurbishment.

A yellow diamond-shaped sign with a black border and the words 'FAMILY BUSINESS' in bold, black, sans-serif capital letters. The sign is set against a background of a blue sky with white clouds.

**FAMILY  
BUSINESS**



# Corporate Responsibility

**People** – To provide the best customer service, and ensure ongoing advancement within the industry, focusing on attracting, developing, and retaining the best people. We are dedicated to improving the well-being of our employees and all those involved in the wider supply chain.

**Community** – To continue to provide a beneficial service to our customers and the wider population, enhance industry standards and public image, and focus on ensuring positive relationships wherever we work. We are dedicated to providing continuous value to local communities.

**Environment** – To ensure our services are continually improving, we are committed to minimising the environmental impact of our work and promoting environmentally positive innovations. We are dedicated to developing increased care and attention to the environment.





# Contact Us

County Washrooms cover the whole of the UK. Our Head Office is in Essex. If you have any further questions about our services, or you would like to discuss your project in more detail, please get in touch.

County Washrooms Group Limited  
Elizabeth House  
28 Baddow Road  
Chelmsford  
Essex  
CM2 0DG

[info@countywashrooms.co.uk](mailto:info@countywashrooms.co.uk)  
[www.countywashrooms.co.uk](http://www.countywashrooms.co.uk)

01245-922200

