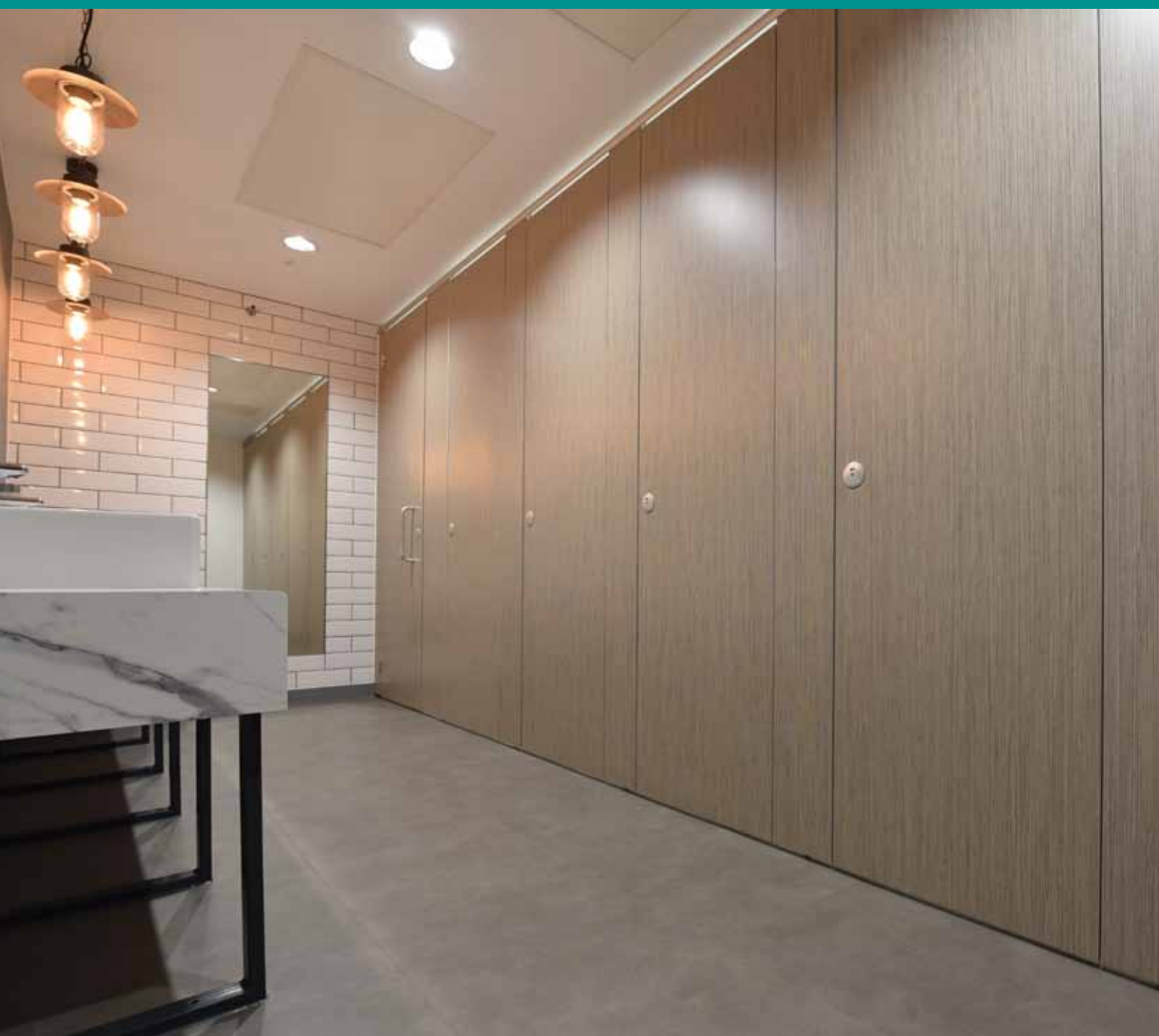


excelsior[®]
washrooms for all environments

Flush30 Cubicle Range

WASHROOMS FOR ALL ENVIRONMENTS



Flush30 Cubicle Range

The affordable flush fronted cubicle solution

At Excelsior we have designed the Flush 30 system to be the affordable industry flush facade cubicle offer. Available with HPL surface finishes, Aluminium extruded rebated meeting stiles and SBAA ironmongery as standard.

The Flush 30 system is available in two standard formats.

1. 1960mm overall proprietry height incorporating a 150mm pedestal leg and SAA 38mm U section headrail.
2. Upto 2700mm overall proprietry height incorporating either a 150mm pedestal leg or floor channel (50mm and 100mm legs also available). SAA 38mm U section headrail (top fix it voidspace above) or SAA 40mm P section headrail (back fix if limited void space above).

Both formats incorporate Aluminium ironmongery as standard with outward opening doors complete with D handles to assist access where doors are set to fall closed. (Stainless steel ironmongery available on request).

Flush 30 is available with High Pressure Laminate PUR bonded onto a 30mm MR core, complete with aluminium extruded door and pilaster edges.

The Flush 30 range is available on a typical delivery period of 3-4 weeks from receipt of approved drawings.

Installation by Excelsior is strongly recommended but not essential as a full set of fixing instructions and technical information is provided with the system.



Aluminium Ironmongery

1. Indicator Faceplate
2. Indicator Slide Bolt
3. Aluminium Leg
4. Aluminium Rebated Meeting Stiles



1.



2.



3.



4.

Flush30 Specifications

Flush 30 Cubicle (1960mm high)

Specifications

Doors and Pilasters:

- High Pressure Laminate PUR bonded onto 30mm MR core
- Rebated Aluminium edges to Excelsior detail

Divisions Specification:

- High Pressure Laminate PUR bonded onto 18mm MR core
- Matching Laminate or 2mm ABS edge detail

Standard Dimensions:

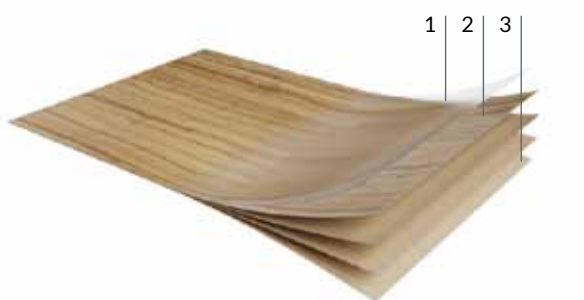
- 1960mm overall height (c/w 150mm leg) x 1500mm deep

All Heights Subject to Material/Colour Selection

Ironmongery:

- Rise & Fall Aluminium Hinges - Ref: EXH-A30
- Recessed Indicator & Keep - Ref: EXL-A30
- Coat Hook - Ref: EXCH-A20
- Continuous Wall Channel - Ref: ALSP3992
- Continuous Division Channel - Ref: ALSP3978
- Headrail SAA - Ref: EXPHR20 P Section 40mm
- Headrail End Caps - Ref: 38mm end
- Leg Options: 150mm - Ref: EXL-A150,
100mm - Ref: EXL-A100
50mm - Ref: EXL-A50

Toilet Roll Holders & Accessories available upon request.



1. Protective overlay for printed decors.
2. Decorative paper impregnated with melamine resin.
3. Layers of kraft paper impregnated with phenolic resin, to be bonded onto MR core.

Flush 30 Cubicle (upto 2700mm High)

Specifications

Doors and Pilasters:

- High Pressure Laminate PUR bonded onto 30mm MR core
- Rebated Aluminium edges to Excelsior detail

Divisions Specification:

- High Pressure Laminate PUR bonded onto 18mm MR core
- Matching Laminate or 2mm ABS edge detail

Standard Dimensions:

- Upto 2700mm overall height (Leg options available) x 1500mm deep (horizontal joint to suit).

All Heights Subject to Material/Colour Selection

Ironmongery:

- Rise & Fall Aluminium Hinges - Ref: EXH-A30
- Recessed Indicator & Keep - Ref: EXL-A30
- Coat Hook - Ref: EXCH-A20
- Continuous Wall Channel - Ref: ALSP3992
- Continuous Division Channel - Ref: ALSP3978
- Headrail SAA - Ref: EXPHR20 P Section 40mm
- Headrail End Caps - Ref: 38mm end
- Leg Options: 150mm - Ref: EXL-A150,
100mm - Ref: EXL-A100
50mm - Ref: EXL-A50
Continuous U Channel

Toilet Roll Holders & Accessories available upon request.

HPL - High Pressure Laminate

High pressure laminate (bonded onto a chipboard or MDF substrate. These core materials offer water resistance only (they are not waterproof) offers heat, scratch and impact resistance with edges finished with a colour match or contrast 2mm PVC detail.

Comfortable in school, office, entertainment, health and retail environments alike.

Ironmongery Finish: Excelsior Semi Bright Anodised Aluminium as standard. (Stainless Steel available upon request).

Colour Selections: Excelsior preferred cubicle & washroom colour selection.

Special Notes: Outward opening doors complete with back to back Aluminium 'D' Handles.

Leg Options 150mm as standard with 100mm and 50mm options or U channel.

Customer to ensure perimeter walls are plumb level at pilaster and partition junctions.

We recommend that outward opening doors open onto an adjacent solid wall to prevent overstrain on hinges.

BIM Objects - Typical Layout

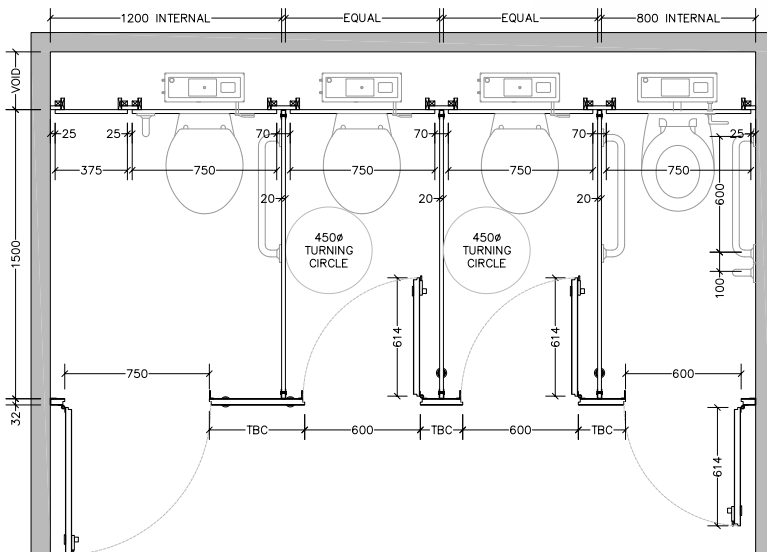
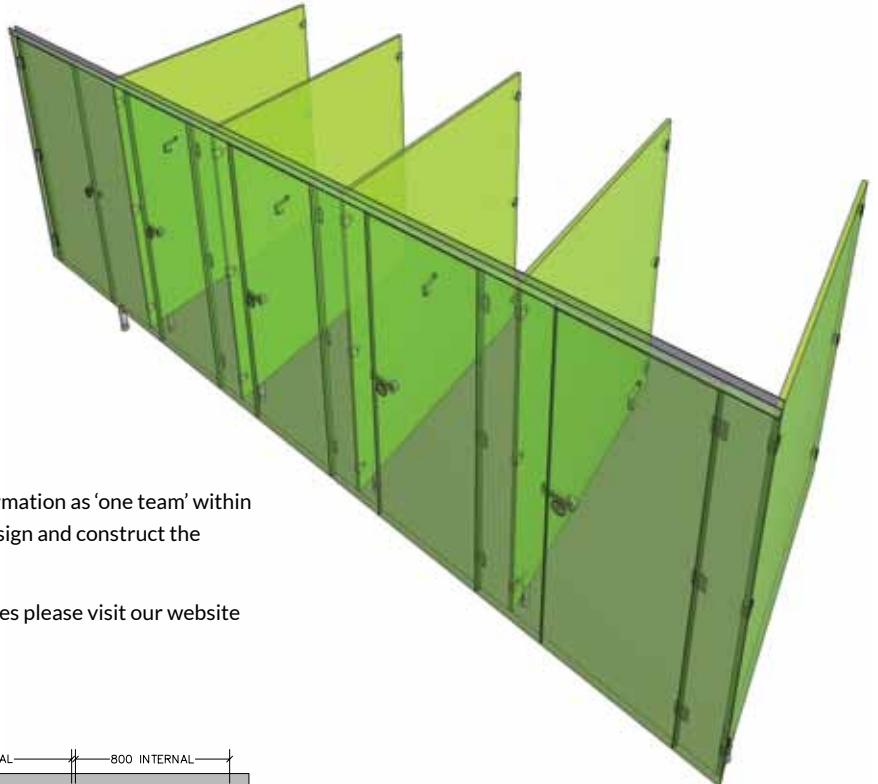
Downloadable BIM Objects

Our BIM Families are a time saving development with fully functional parametric objects. This highly acclaimed 3D model-based process is specifically designed for Infrastructure and Building projects. It offers many benefits to owners that enable simplicity for project management.

- Visualisation of designs
- Simulation of multiple design ideas
- Productivity improvement
- Analysing and testing of application and performance

BIM enables collaborative working; management of information as 'one team' within a digital model holding all the information required to design and construct the project from conception to completion.

If you would like to register and download our BIM families please visit our website www.excelsior-cubicles.co.uk/bim-objects



From creation to installation...
you can rest assured

Excelsior have undertaken the manufacture, supply and installation of bespoke washroom products in all washroom environments since 1978. We have a wide selection of safe, attractive and reliable systems to suit all applications, from Nursery Schools right through to Leisure Centres and Hospitals.

excelsior[®]
washrooms for all environments

Excelsior Panelling Systems Ltd
Unit 2, Woodside Industrial Estate, Pedmore Road, Dudley, West Midlands, DY2 0RL

Tel: +44 (0)1384 267770 **Fax:** +44 (0)1384 482127
E-mail: enquiries@excelsiorps.co.uk **Web:** www.excelsior-cubicles.co.uk

