

excelsior[®]
washrooms for all environments

Skyline Cubicle Range

WASHROOMS FOR ALL ENVIRONMENTS



Skyline Cubicle Range

The elegant and discreet full height system

Meeting the demands of modern education and mixed use environments, Skyline is a floor to ceiling system providing the user with maximum privacy and comfort. A full range of complimentary duct panels and vanity units are available on request.

Perfect for locations where greater user privacy is required. The Skyline system is an extension of our proprietary height cubicle systems providing a floor to ceiling application with an aluminium floor channel or an alternative pedestal leg option to create a standard floor clearance.

The Skyline Range is available in 3 different specification board options to meet both budget and durability requirements.

Hardware is available in a standard aluminium finish with bespoke colours and finishes available on request at an additional cost.

Panel and door colours can be selected from a large range of preferred laminate manufacturers.

Wall & duct panelling and fully framed vanity units can be supplied to complement this system.

The Skyline cubicle range is available on a typical delivery basis of 3-4 weeks from receipt of approved drawings and confirmation of all colour finishes.

Installation by Excelsior is strongly recommended but not essential as a full set of fixing instructions and technical information is provided with the system.



Aluminum Ironmongery

1. Indicator Faceplate
2. Indicator Slide Bolt
3. Aluminium Leg
4. Aluminium Hinge



Skyline Specifications

Skyline 12mm SGL Cubicles (Floor to ceiling)

Specifications

Doors, Divisions & Pilasters:

- 12mm Solid Compact Grade Laminate
- Black core radius & polished edge finish

Standard Dimensions:

- Up to 2600/2800mm as standard x 1500 deep

Ironmongery:

- Rise and fall aluminium hinges Ref: EXH-A13
- Recessed Indicator and Keep Ref: EXL-A13
- Coat Hook - Ref: EXCH-A13
- Brackets - 13mm SAA Division U-Channel 13mm SAA Wall Pilaster J-Channel
- Headrail - Ref: EXPHR13
- Division base rail 13mm SAA U-Channel

Toilet Roll Holders & Accessories available upon request.

Skyline 20mm HPL Cubicles (Floor to ceiling)

Specifications

Doors, Divisions & Pilasters:

- High Pressure Laminate PUR bonded onto 18mm MR core
- 2mm ABS edge finish

Standard Dimensions:

- Up to 2600/2800mm floor to ceiling height x 1500mm deep

Ironmongery:

- Rise and fall aluminium hinges Ref: EXH-A20
- Recessed Indicator and Keep Ref: EXL-A20
- Coat Hook - Ref: EXCH-A20
- Brackets - 20mm SAA Division U Channel 20mm SAA Wall Pilaster J-Channel
- Headrail - Ref: EXPHR20
- Division base rail 20mm SAA U-Channel

Toilet Roll Holders & Accessories available upon request.

Skyline Summit CDF Cubicles (Floor to ceiling)

Specifications

Doors, Divisions and Pilasters

- 13mm Laminated Compact Density Fibreboard
- Black core radius & machined edge finish

Standard Dimensions:

- Up to 2800mm floor to ceiling height x 1500mm deep

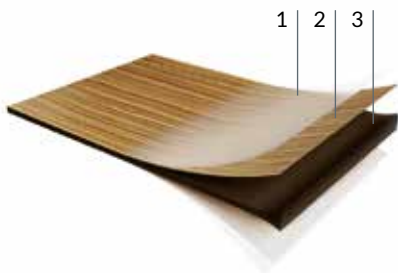
Ironmongery:

- Rise and fall aluminium hinges Ref: EXH-A13
 - Recessed Indicator and Keep Ref: EXL-A13
 - Coat Hook - Ref: EXCH-A13
 - Brackets - 13mm SAA Division U-Channel 13mm SAA Wall Pilaster J-Channel
 - Headrail - Ref: EXPHR13
 - Division base rail 13mm SAA U-Channel
- Colour Selection: Excelsior Kronoswiss CDF Cubicle and Washroom Range only.

Toilet Roll Holders & Accessories available upon request.

SGL

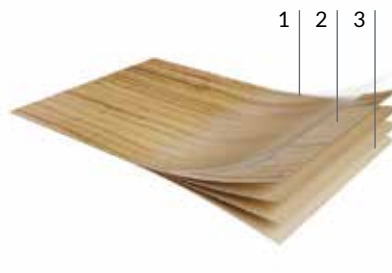
Compact Solid Grade Laminate



1. Protective overlay for printed decors.
2. Decorative paper on both sides impregnated with melamine resin.
3. Multiple layers of kraft paper impregnated with phenolic resin, to form a rigid exposed core with a radiused, polished edge.

HPL

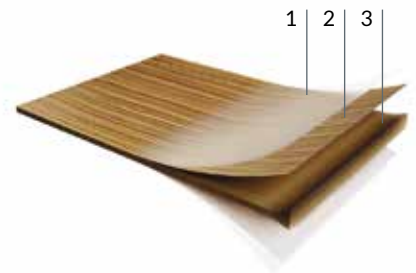
High Pressure Laminate



1. Protective overlay for printed decors.
2. Decorative paper impregnated with melamine resin.
3. Layers of kraft paper impregnated with phenolic resin, to be bonded onto MR core.

CDF

Compact Density Fibreboard



1. Protective overlay for printed decors.
2. Decorative paper on both sides impregnated with melamine resin.
3. Compact Density Fibreboard core.

Ironmongery Finish: Excelsior Semi Bright Anodised Aluminium as standard.

Colour Selections: Excelsior preferred cubicle & washroom colour selection.

Special Notes: Outward opening doors complete with back to back Aluminium 'D' Handles and full length 'Z' Section door Stop/Keep.

Partitions may be supplied in 2 pieces to meet CDM/Manual Handling constraints.

Partitions fitted into floor fixed U channel and finished 20mm below ceiling height. Doors and pilasters 10mm floor clearance

Leg Options: 50mm, 100mm and 150mm available in lieu of floor channel if required.

We recommend that outward opening doors open onto an adjacent solid wall to prevent overstrain on hinges.

BIM Objects - Typical Layout

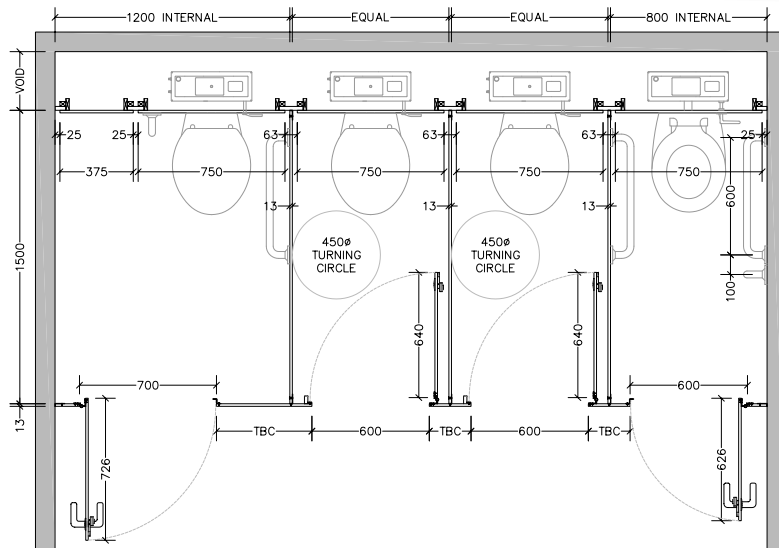
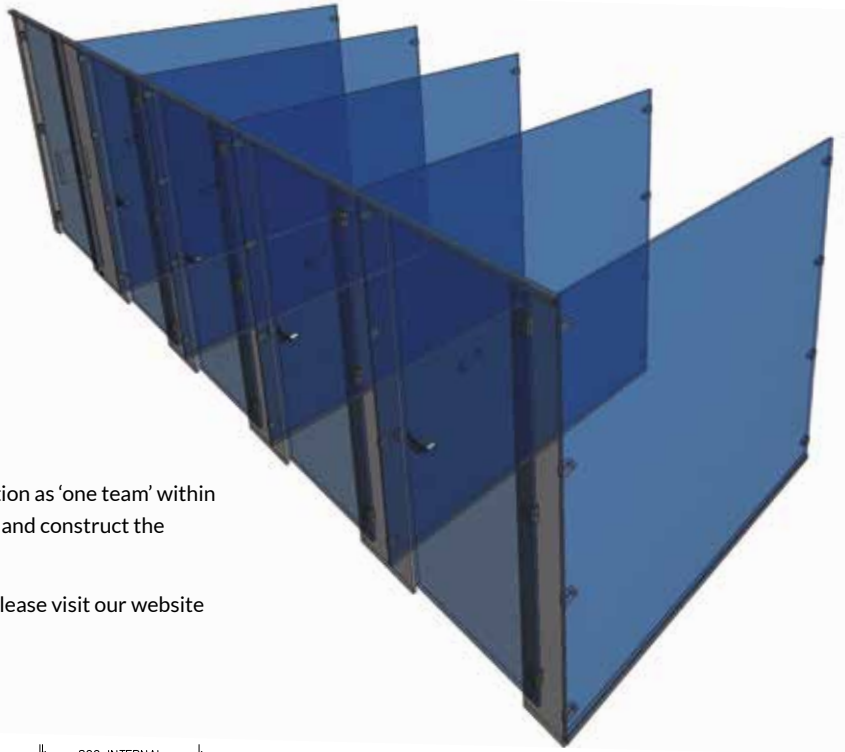
Downloadable BIM Objects

Our BIM Families are a time saving development with fully functional parametric objects. This highly acclaimed 3D model-based process is specifically designed for Infrastructure and Building projects. It offers many benefits to owners that enable simplicity for project management.

- Visualisation of designs
- Simulation of multiple design ideas
- Productivity improvement
- Analysing and testing of application and performance

BIM enables collaborative working; management of information as 'one team' within a digital model holding all the information required to design and construct the project from conception to completion.

If you would like to register and download our BIM families please visit our website www.excelsior-cubicles.co.uk/bim-objects



From creation to installation...
you can rest assured

Excelsior have undertaken the manufacture, supply and installation of bespoke washroom products in all washroom environments since 1978. We have a wide selection of safe, attractive and reliable systems to suit all applications, from Nursery Schools right through to Leisure Centres and Hospitals.

excelsior[®]
washrooms for all environments

Excelsior Panelling Systems Ltd
Unit 2, Woodside Industrial Estate, Pedmore Road, Dudley, West Midlands, DY2 0RL

Tel: +44 (0)1384 267770 **Fax:** +44 (0)1384 482127
E-mail: enquiries@excelsiorps.co.uk **Web:** www.excelsior-cubicles.co.uk

