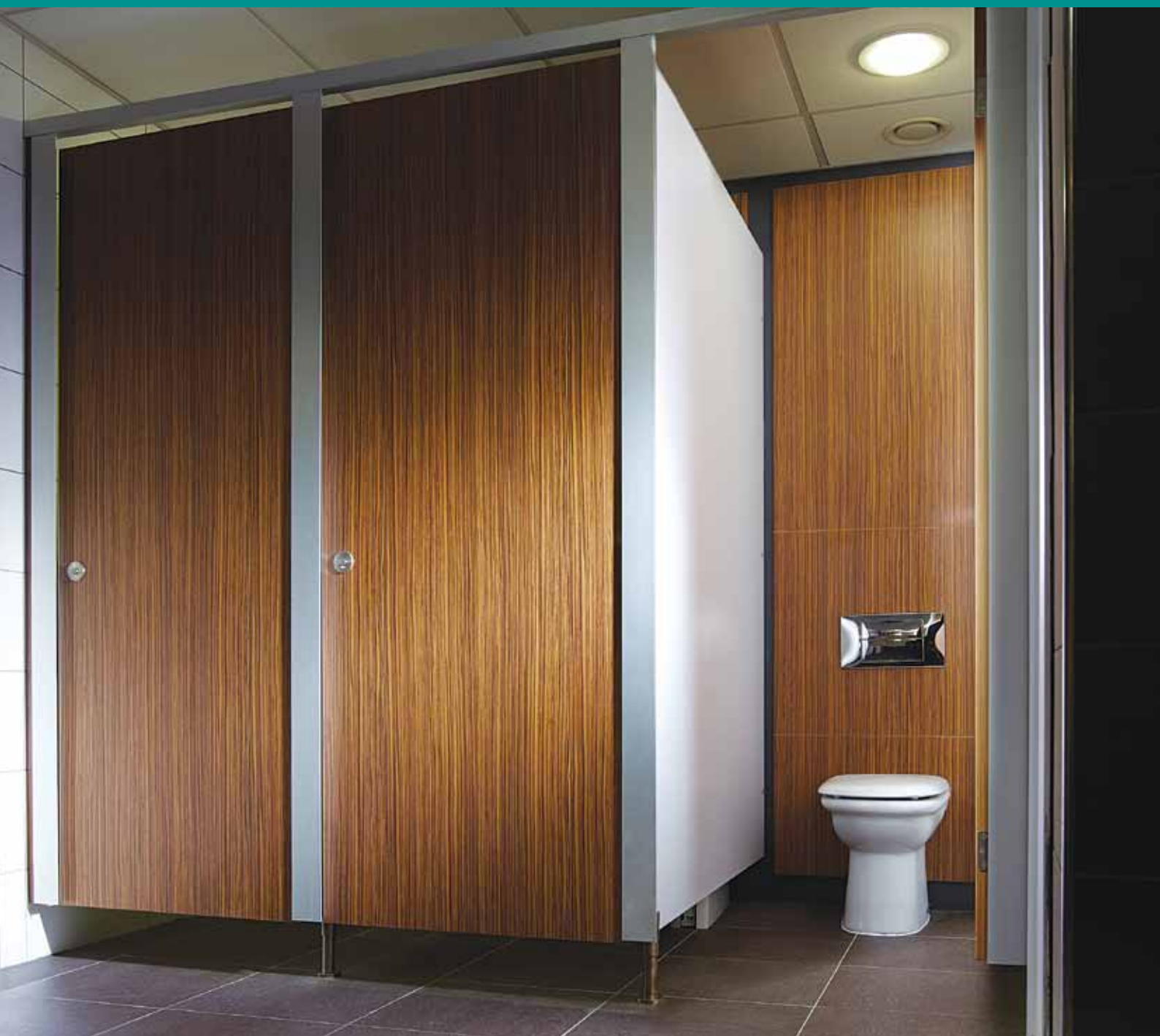


**excelsior**<sup>®</sup>  
washrooms for all environments

## T-Line Cubicle Range

WASHROOMS FOR ALL ENVIRONMENTS



# T-Line Cubicle Range

## The modern and minimalist cubicle solution

The T-Line cubicle range has been created to meet the most discerning specifiers' requirements. Bringing a modern and minimalist feel to the washroom environment in the form of Extruded Satin Anodised Aluminium pilasters and headrail offering a true slimline appearance.

T-Line's specially designed extrusions allow all the doors to sit in the same plane. This system sits equally at home in many different environments from the most prestigious office or hotel development to education or healthcare projects alike.

Wall & duct panelling and fully framed vanity units can be supplied to complement this system.

The T-line range is available on a typical delivery period of 3-4 weeks from receipt of approved drawings and confirmation of all colour finishes.

Installation by Excelsior is strongly recommended but not essential as a full set of fixing instructions and technical information is provided with the system.



### Aluminum Ironmongery

1. Indicator Faceplate
2. Indicator Slide Bolt
3. Aluminium Leg
4. Aluminium Hinge



# T-Line Specifications

## T LINE 20mm HPL Cubicle

### Specifications

#### Pilasters and Headrail:

- Extruded Aluminium Pilaster and Headrail profiles - SAA as standard
- Hybrid & Nickel powder finishes available upon request

#### Doors & Divisions Panel Specification:

- HPL bonded onto 18mm MR core
- 2mm ABS edge finish

#### Standard Dimensions:

- 2000mm overall height (including 150mm ground clearance and 40mm headrail) x 1500mm deep

#### Ironmongery:

- Rise and fall aluminium hinges Ref: EXH-AT20
- Recessed Indicator and Keep - Ref: EXL-A20
- Leg 150mm - Ref: EXL-A150
- Coat Hook - Ref: EXCH-A20
- Brackets - Ref: EXB-A3/5
- Headrail - Ref: EXPHR20
- Headrail End Caps - Ref: EXHREND

*Toilet Roll Holders & Accessories available upon request.*

## T LINE 12mm SGL Cubicle

### Specifications

#### Pilasters and Headrail:

- Extruded Aluminium Pilaster and Headrail profiles - SAA as standard
- Hybrid & Nickel powder finishes available upon request

#### Doors & Divisions Panel Specification:

- 12mm Compact Solid Grade Laminate
- Black core radius & polished edge finish

#### Standard Dimensions:

- 2000mm overall height (including 150mm ground clearance and 40mm headrail) x 1500mm deep

#### Ironmongery:

- Rise & fall aluminium hinges Ref: EXH-AT13
- Recessed Indicator & Keep - Ref: EXL-A13
- Leg 150mm - Ref: EXL-A150
- Coat Hook - Ref: EXCH-A13
- Brackets - Ref: EXB-A3/7 and EXB-A3/8
- Headrail - Ref: EXPHR13
- Headrail End Caps - Ref: EXHREND

*Toilet Roll Holders & Accessories available upon request.*

## T LINE 19mm MFC Cubicle

### Specifications

#### Pilasters and Headrail:

- Extruded Aluminium Pilaster and Headrail profiles - SAA as standard
- Hybrid & Nickel powder finishes available upon request

#### Doors & Divisions Panel Specification:

- 19mm MR Melamine Faced Chipboard
- 2mm ABS edge finish

#### Standard Dimensions:

- 2000mm overall height (including 150mm ground clearance and 40mm headrail) x 1500mm deep

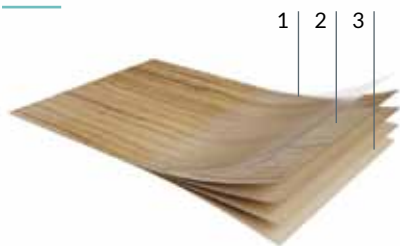
#### Ironmongery:

- Rise and fall aluminium hinges Ref: EXH-AT20
- Recessed Indicator and Keep - Ref: EXL-A20
- Leg 150mm - Ref: EXL-A150
- Coat Hook - Ref: EXCH-A20
- Brackets - Ref: EXB-A3/5
- Headrail - Ref: EXPHR20
- Headrail End Caps - Ref: EXHREND

*Toilet Roll Holders & Accessories available upon request.*

## HPL

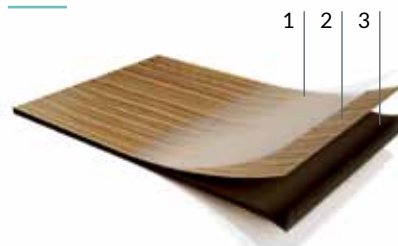
### High Pressure Laminate



1. Protective overlay for printed decors.
2. Decorative paper impregnated with melamine resin.
3. Layers of kraft paper impregnated with phenolic resin, to be bonded onto MR core.

## SGL

### Compact Solid Grade Laminate



1. Protective overlay for printed decors.
2. Decorative paper on both sides impregnated with melamine resin.
3. Multiple layers of kraft paper impregnated with phenolic resin, to form a rigid exposed core with a radiused, polished edge.

## MFC

### Melamine Faced Chipboard



1. Decorative paper on both sides impregnated with melamine resin.
2. Chipboard core.

**Ironmongery Finish:** Excelsior Semi Bright Anodised Aluminium as standard. (powder coated available upon request).

**Colour Selections:** Excelsior preferred cubicle & washroom colour selection.

2000mm O/A height as standard.

Full height option available upon request (up to 2700mm).

**Special Notes:** Outward opening doors complete with back to back Aluminium 'D' Handles and full length 'Z' Section door Stop/Keep.

We recommend that outward opening doors open onto an adjacent solid wall to prevent overstrain on hinges.

# BIM Objects - Typical Layout

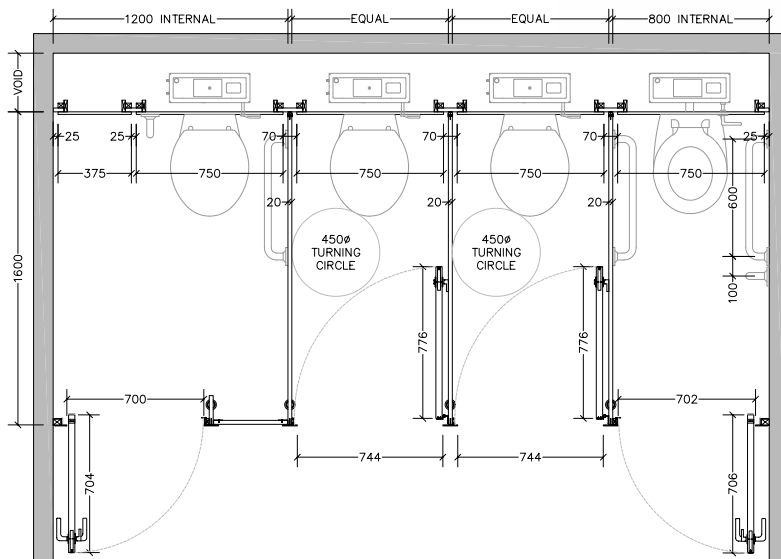
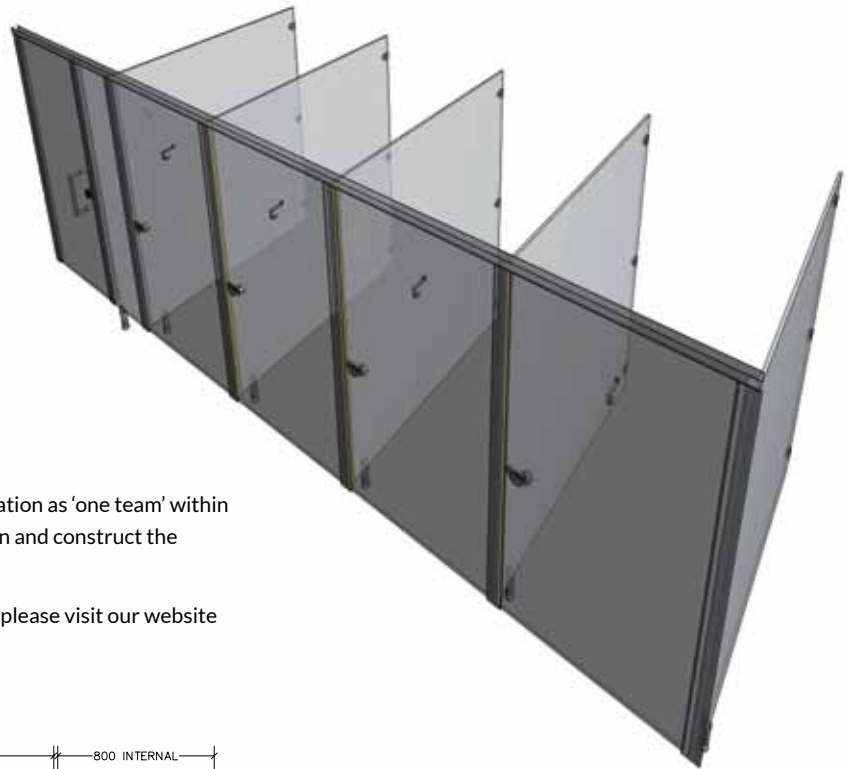
## Downloadable BIM Objects

Our BIM Families are a time saving development with fully functional parametric objects. This highly acclaimed 3D model-based process is specifically designed for Infrastructure and Building projects. It offers many benefits to owners that enable simplicity for project management.

- Visualisation of designs
- Simulation of multiple design ideas
- Productivity improvement
- Analysing and testing of application and performance

BIM enables collaborative working; management of information as 'one team' within a digital model holding all the information required to design and construct the project from conception to completion.

If you would like to register and download our BIM families please visit our website [www.excelsior-cubicles.co.uk/bim-objects](http://www.excelsior-cubicles.co.uk/bim-objects)



From creation to installation...  
you can rest assured

Excelsior have undertaken the manufacture, supply and installation of bespoke washroom products in all washroom environments since 1978. We have a wide selection of safe, attractive and reliable systems to suit all applications, from Nursery Schools right through to Leisure Centres and Hospitals.

**excelsior**<sup>®</sup>  
washrooms for all environments

**Excelsior Panelling Systems Ltd**  
Unit 2, Woodside Industrial Estate, Pedmore Road, Dudley, West Midlands, DY2 0RL

Tel: +44 (0)1384 267770 Fax: +44 (0)1384 482127  
E-mail: [enquiries@excelsiorps.co.uk](mailto:enquiries@excelsiorps.co.uk) Web: [www.excelsior-cubicles.co.uk](http://www.excelsior-cubicles.co.uk)

